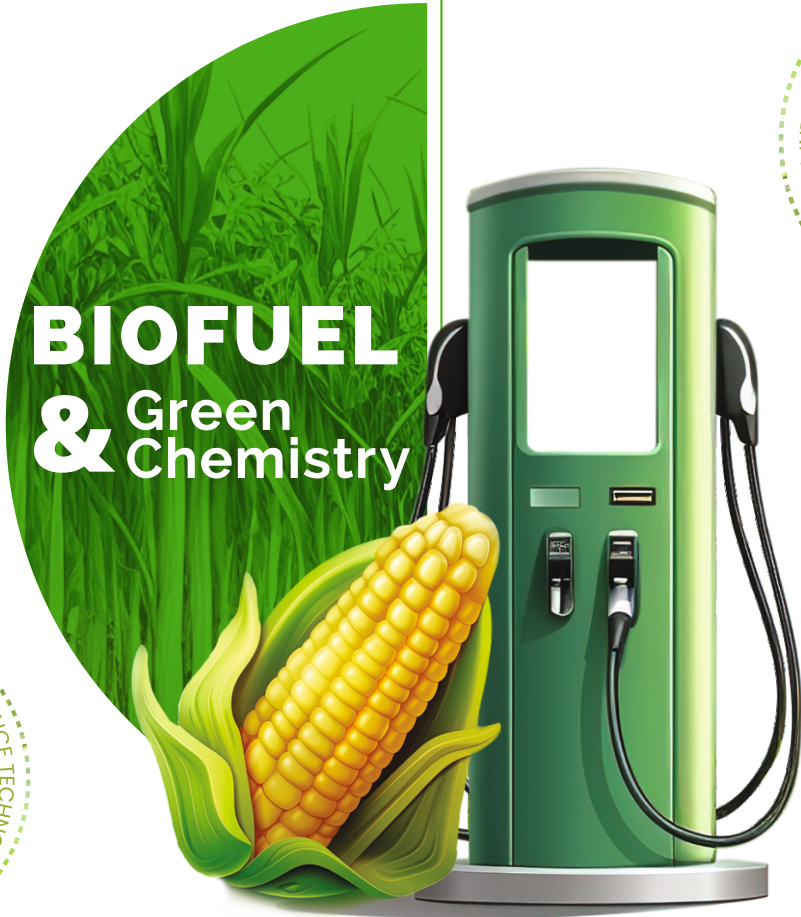




Solutions for Sustainable Tomorrow



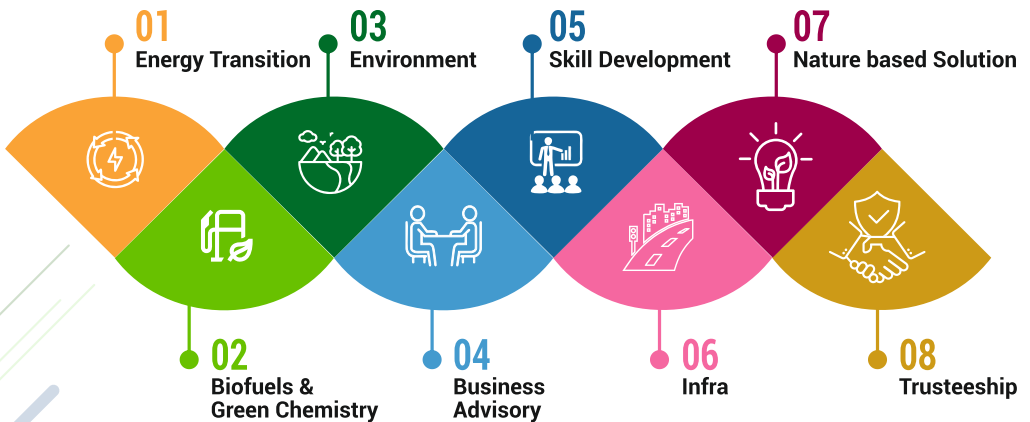
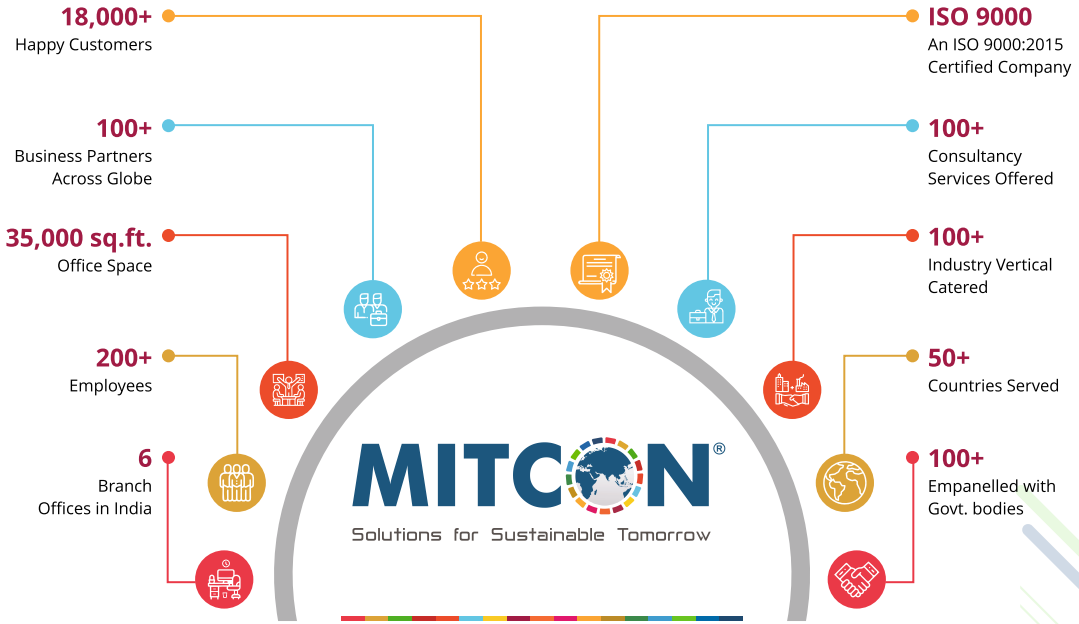
BIOFUEL & Green Chemistry



----- Fueling a Greener Life -----



WHAT IS MITCON?



THE VARIETY OF ROLES MITCON PLAYS:

- A Dedicated Player in Renewable Energy
- A Guiding Light on a Career Path
- A Pioneer in Industrial Development
- A Maestro in Healthcare Development
- A Developer and Helping hands for the backbone of the country (Farmers)

OUR PORTFOLIO OF SERVICES

INDUSTRIES OR SECTORS:

As a global consultant to businesses & organizations worldwide, our Biofuels & Green Chemistry division can assist you in setting up end to end solutions to develop following installations/plants:

- Distillery Plant (RS, ENA, AA/Ethanol)
- Bio-CNG / CBG
- Waste to energy projects
- Sugar Mills/Refineries
- Power Plant (Cogeneration / Captive /Independent Power Plants)
- Customised Process Units, Food, Beverages, Dairy & Agri products

EXPERIENCE:

- 1000+ MW capacity decentralized captive/cogeneration/standalone power projects
- 4,00,000+ TCD New/Expansion & Modernization Sugar plants /Refineries /Jaggeries / process units/Power plants:
 - 400+ Projects – Pre-investment Services
 - 40+ Engineering/Project Management Services
- 15,000+ KLPD New/Expansion/ Integrated/Stand-alone RS/ENA plants /Fuel Ethanol Distilleries:
 - 300+ Projects – Pre-investment Services
 - 20+ Engineering/Project Management Services

PORTFOLIO OF SERVICES:

- AI-based Satellite Monitoring of Sugarcane farming, harvesting & forecasting
- 3D virtual tour of existing plant (As-Is Model with dimension)
- Feasibility Studies (PFR/DFR)
- Detailed Project Report (DPR)
- Techno Economic Viability (TEV)
- Lenders Independent Engineer (LIE)
- Agency for Specialised Monitoring (ASM)
- Feedstock Survey & Sourcing Plan
- Environment related services which include EC, project monitoring & evaluation
- Tender & Bid management
- Detailed Engineering services
- Project Management Consultancy (PMC)
- EPCM/EPC Solutions
- Technical Audits for existing plants, old/ closed plants
- Process, efficiency enhancements & audits for existing plants, old/closed plants
- Supervision services during erection, construction & commissioning
- Solar Power (Rooftop and Ground Mounted – CAPEX & OPEX model)
- Carbon Credit Exchange Registration & Trading
- Customised solution / Business model for Agri & Food Industry
- Energy Audit



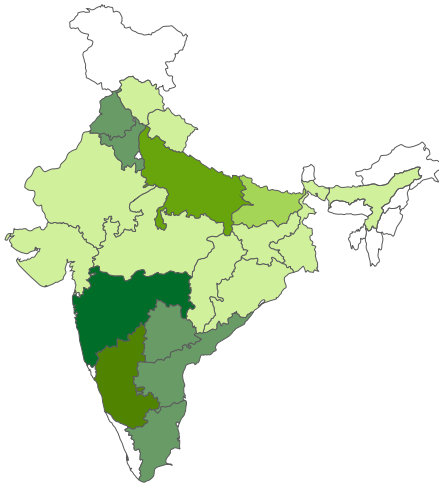
MITCON is a Science Based Targets initiative (SBTi) registered company and has incorporated the 17 SDGs (Sustainable Development Goals by United Nations) in every working aspect. We are also the leading consultancy in Carbon Credit and Energy Transition sectors.

OUR COMPANY IS **EMPANELLED:**

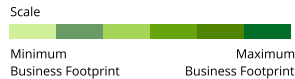
- Bank of India
 - Bank of Maharashtra
 - Canara Bank
 - Central Bank of India
 - State Bank of India
 - Bank of Baroda
 - Commissionerate of Sugar (Gov. of Maharashtra)
 - Indian Bank Association
 - National Bank for Financing Infrastructure and Development
 - PFC Consulting Ltd.
 - REC Ltd.
 - IREDA
 - HDFC Bank
 - ICICI Bank
 - Axis Bank
 - Indusind Bank
 - AU Small Finance Bank
- ...And 15+ More Organisations


OUR **CLIENTELE:**

300+ Private & Co-operative Sugar Mills and Distilleries, Pan India




Geographical Spread Past 5 years



 MITCON Consultancy & Engineering Services Limited

1st Floor, Kubera Chambers, Shivajinagar, Pune - 411 005, Maharashtra (INDIA)

 +91 89566 89088 | +91 89569 98263
+91 74477 63427 | +91 91563 72734

 power@mitconindia.com

 www.mitconindia.com/biofuel-and-green-chemistry



MITCON CREDENTIAL
PARTNER WITH TRUSTED CREDENTIALS

