



Solutions for Sustainable Tomorrow



MITCON

Consultancy &
Engineering Services
Limited



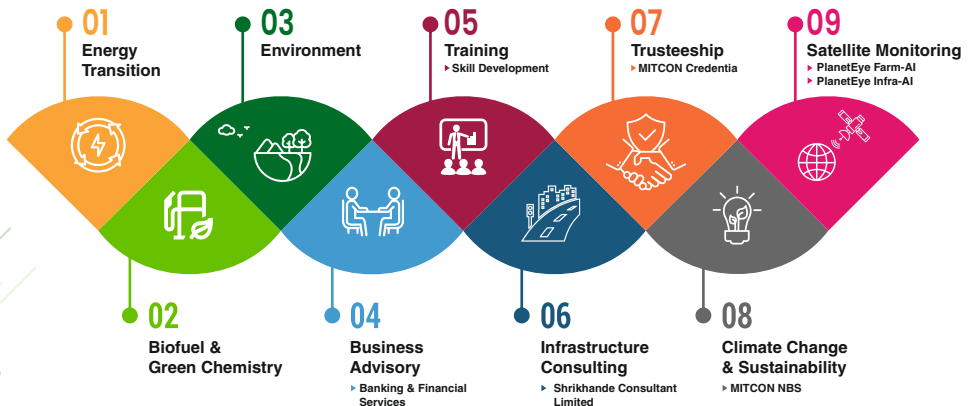
----- Solutions for Sustainable Tomorrow -----



WHAT IS MITCON?



- Founder Member of World Alliance for Decentralized Energy (WADE), UK and Patron Member of Co-generation Association of India (Cogen India)
- Macro level assignments & promotional work with MNRE, IREDA, Winrock International India, USAID, UNDP, Financial Institutions & Banks
- Participation in number of international events (UK, USA, Europe, Africa, UAE, Sri Lanka & Singapore)



THE VARIETY OF ROLES MITCON PLAYS

- A Dedicated Player in **Renewable Energy**
- A Guiding Light on a **Career Path**
- A Pioneer in **Industrial Development**
- A Maestro in **Carbon Projects**
- A Sustainable Agriculture developer & **helping hands** for farmers

CLIMATE CHANGE & SUSTAINABILITY

Capabilities

Carbon Accounting & Decarbonization Strategy

- Organization Carbon footprint (ISO 14064 /GHG Protocol)
- Product Carbon Footprint (ISO 14067, TFS)
- Event Carbon Footprint (ISO 20121)
- Carbon Border Adjustment Mechanism (CBAM) Reporting
- Net Zero/Carbon Neutrality Strategy (ISO 14068/PAS 2060)

Sustainability Reporting focused on Climate & Nature

- Task Force on Climate Related Financial Disclosures (TCFD)
- Task Force on Nature Related Financial Disclosures (TNFD)

Biodiversity Assessment

- GRI 101: Biodiversity
- TNFD - LEAP Approach
- Science-Based Targets for Nature (SBTN)
- Kunming-Montreal Global Biodiversity Framework

Sustainability Reporting

- Global Reporting Initiative (GRI)
- International Sustainability Standards Board (ISSB)
- European Sustainability Reporting Standards (ESRS)
- Corporate Sustainability Reporting Directive (CSRD)
- CDP (formerly Carbon Disclosure Project)

Business Climate Risk Assessment

- Physical Risk
- Transitional Risk

Life Cycle Assessment (ISO 14040/ 14044)

- Cradle to Grave
- Cradle to Gate
- Gate to Gate

Energy Efficiency & Management System

- ISO 50001: EnMS Consultancy
- Detailed Energy Audit
- Mandatory Energy Audit
- Investment Grade Energy Audit
- Monitoring & Verification
- Energy Service Company (ESCo) Services
- PAT & CCTS Advisory Services
- Water Audit/Water Balance Study

18+ Sectors We Cater

- Iron & Steel
- Aluminum
- Foundry
- Cement
- Chemical/Chlor-Alkali
- Power
- Textile
- Fertilizers
- Railways
- Transmission & Distribution
- Automobiles
- Auto Ancillary
- Paper & Pulp
- Oil & Gas
- Petrochemical
- Pharmaceutical
- Real Estate: Commercial
- Real Estate: Residential
- Engineering & Forging
- Sugar, Distillery & Ethanol, etc.

CARBON PROJECT DEVELOPMENT



1,200+

Decarbonization and
Energy Efficiency Projects



37,000 Acres+

Afforestation Project Registered under
VCS Registry



\$15 million+

Carbon Credit funds syndicated from
sale of Carbon Credits



210+

Carbon Credit Registrations
Projects

BUSINESS ADVISORY

Expert Business Advisory Services for Growing Companies, Entrepreneurs & Conglomerates.
We have successfully executed in India and abroad



₹ 2,64,950 Cr+

Pre-investment reports for investment in
various sectors along with monitoring of
the projects.



₹ 500 Cr+

Market Studies / Baseline Studies /
Impact Studies

SATELLITE MONITORING



5

Presence
in states



16,000+

Acre field in
continuous
monitoring



1,000+ km

City road near
real time survey



Land, Water
and Air
surveillance
capability



4,50,000+

Satellite reports
delivered



4 Billion+

liter helped
in water saving



46+

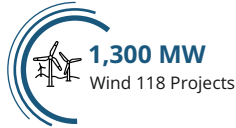
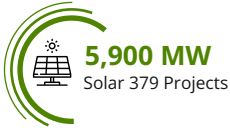
Crops
ready advisory



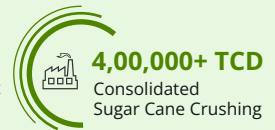
170+

Agri commodity
tracking

ENERGY TRANSITION



BIOFUEL & GREEN CHEMISTRY



ENVIRONMENT





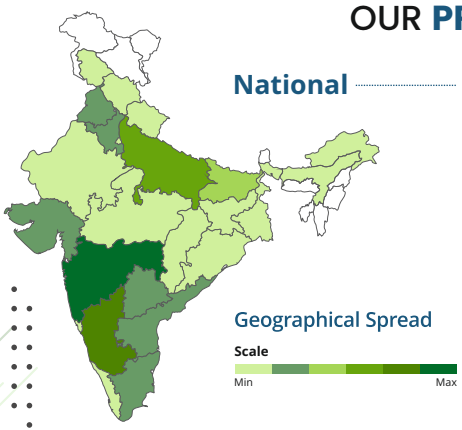
MITCON is a Science Based Targets initiative (SBTi) registered company and has incorporated the 17 SDGs (Sustainable Development Goals) in every work aspect.



OUR EMPANELLEMENTS

- Departments of various Central & State Governments
- MAHAPREIT
- NBFC's
- Private & Public Sector Banks
- Solar Energy Corporation of India
- IBA
- SMART
- USICEF
- NTPC
- IREDA
- REC
- PFC
- SIDBI
- MECON
- BEE
- PTC
- CIDCO
- Sugar Commissionerate of Maharashtra ... and counting

OUR PRESENCE



- International**
- Bhutan
 - Comoros
 - Congo (DRC)
 - Ghana
 - Kenya
 - Mauritius
 - Mozambique
 - Nepal
 - Sri Lanka
 - Tanzania
 - UAE
 - Uganda
 - United Kingdom
 - Vietnam



MITCON Consultancy & Engineering Services Limited
1st Floor, Kubera Chambers, Shivajinagar, Pune - 411005
Maharashtra (INDIA)

020 66289100

bd@mitconindia.com **www.mitconindia.com**

